

# **PATHA BHAVAN**

## **MONT- II**

### **ENGLISH WORKSHEET**

**( To be learnt thoroughly by all )**

(The worksheets and videos will be visible in the school website for 10 working days from the date of uploading. We request all the parents to kindly take a print out / copy down the details to teach the children at home.)

(All the topics given in the worksheet will be again discussed in detail once the school reopens.)

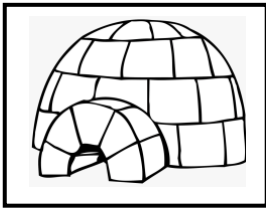
**Wishing our children the very best.**

**Stay home, stay safe.**

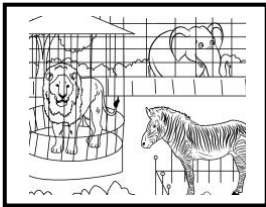
- Match the sounds according to the pictures to complete the words



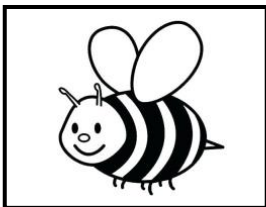
tr \_\_\_\_\_



igl \_\_\_\_\_



z \_\_\_\_\_



b \_\_\_\_\_

ch

oo

ee

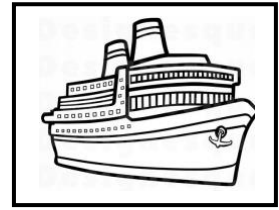
sh

ee

ch

oo

sh



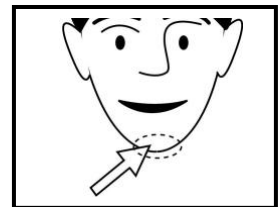
\_\_\_\_\_ ip



\_\_\_\_\_ urch



\_\_\_\_\_ op



\_\_\_\_\_ in

- Make these words with your cut out letters